

ORION HERO ENDCAP ASSEMBLY GUIDE



Intertek

Sanitation Listed
Certified to NSF/ANSI 2 by Intertek

-Size of parts will differ depending on customer's order.

-Quantity of parts might differ depending on customer's order.

NEED:



Two people needed



Level



Utility
Gloves

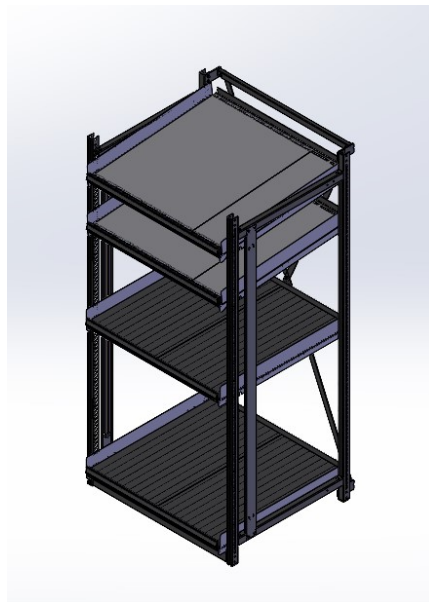


Ball tip hex L-
key, 3/16"

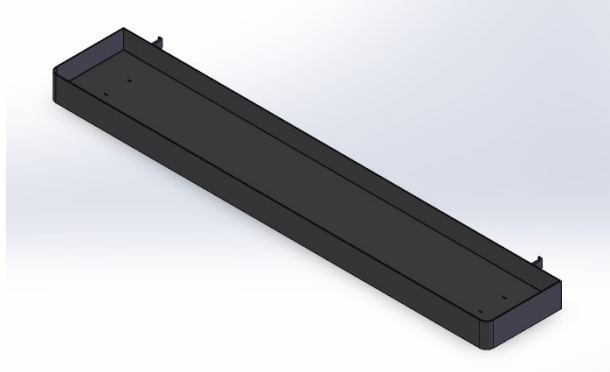


Ball tip hex Lkey,
3/32"

PARTS LIST

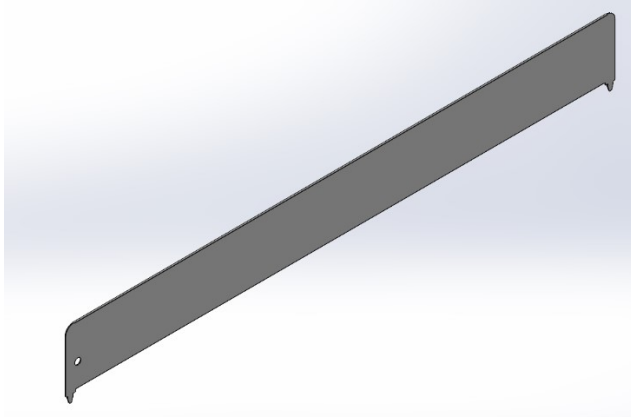


VHE07-1400-FA (CENTER
TOWER FINAL ASSEMBLY 40.5"
W X 38" D X 84.3" H) QTY. 1

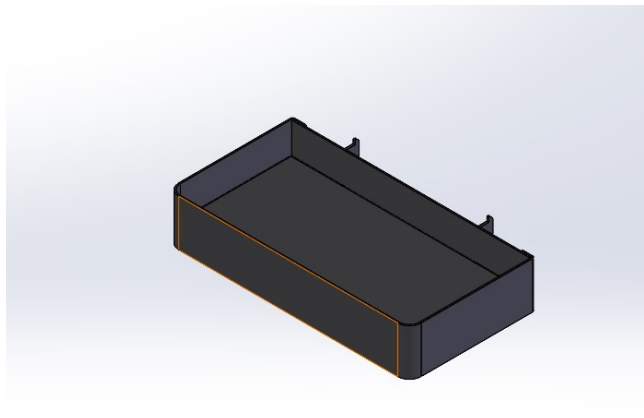


VHE07-1500-WT (SIDE SHELF
WELDMENT (37.65X12X2.25)
PACKAGED WITH LIGHTS)

QTY. 10

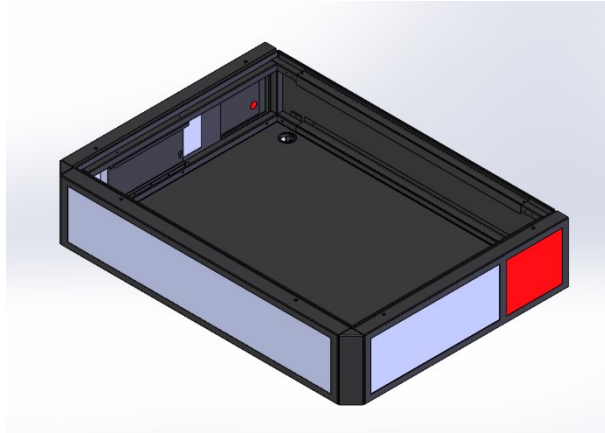


SC-DV34M03IBE-03 (FLAT
FRONT LOCKING DIVIDER
34.75X3.5) QTY. 8



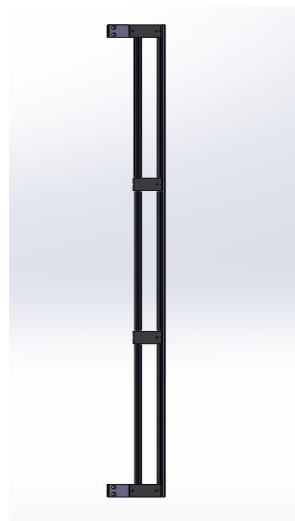
VHE07-1600-WT (FRONT SHELF
WELDMENT 12X6X2.25)

QTY. 12



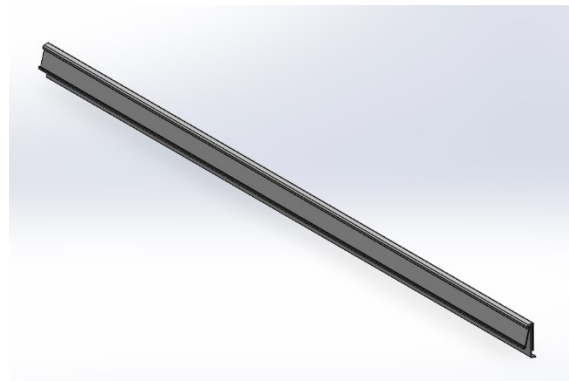
VHE07-2000-KT (HEADER ASSEMBLY - LARGE)

QTY. 1



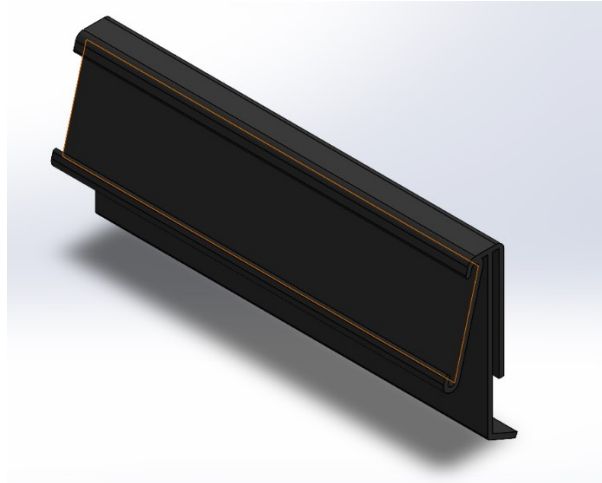
VHE07-1700-WT (SLOTTED UPRIGHT FRAME WELDMENT BLK)

QTY. 2



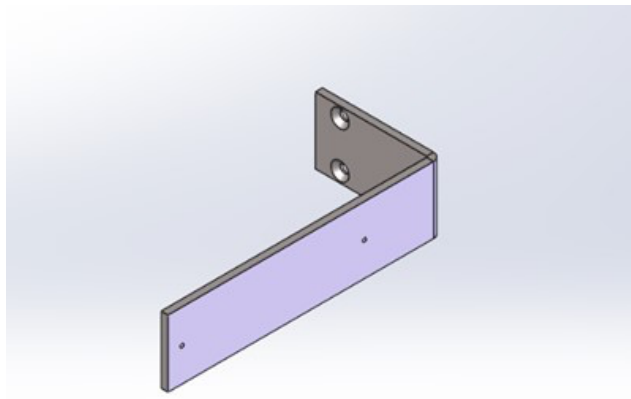
PL-PT36M02EBK-60 (PTM, VR, 36.75X2.25, BK, W/O PLEXI HOLDER)

QTY. 10



PL-PT10002EBK-60 (PTM, VR,
10.875X2.25, BK, W/O PLEXI
HOLDER)

QTY. 12



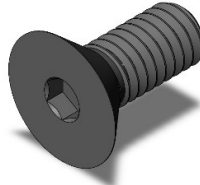
VHE07-121-SM (SUPPORT
BRACKET - ARM BLACK)

QTY. 2

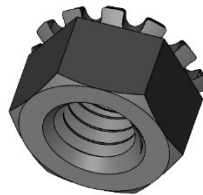
Included hardware



8-32 X 3/4" STEEL BUTTON
HEAD SCREW QTY. 8



5/16-18 X 3/4" HEX DRIVE, FLAT
HEAD SCREW QTY. 12

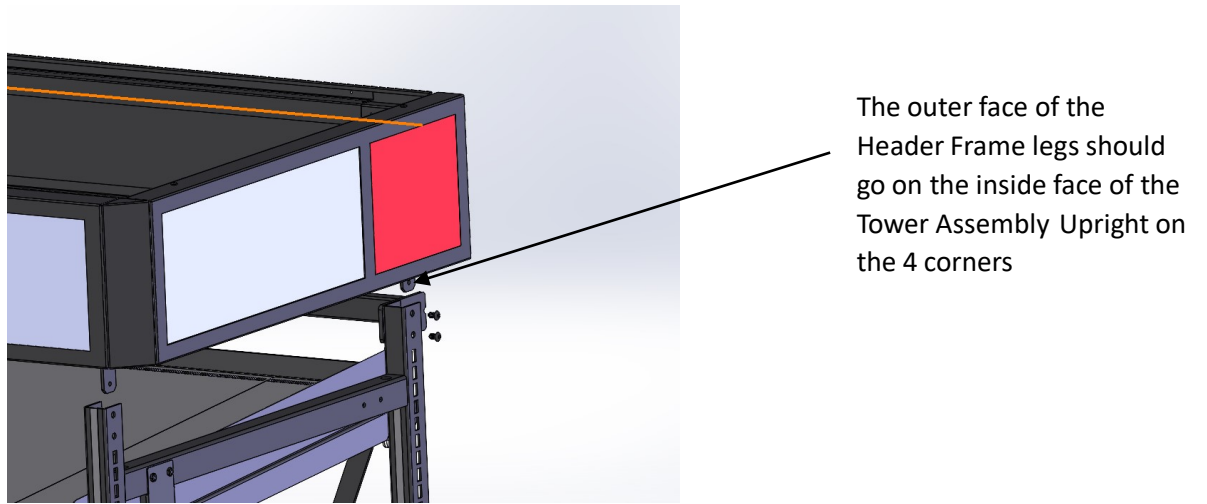
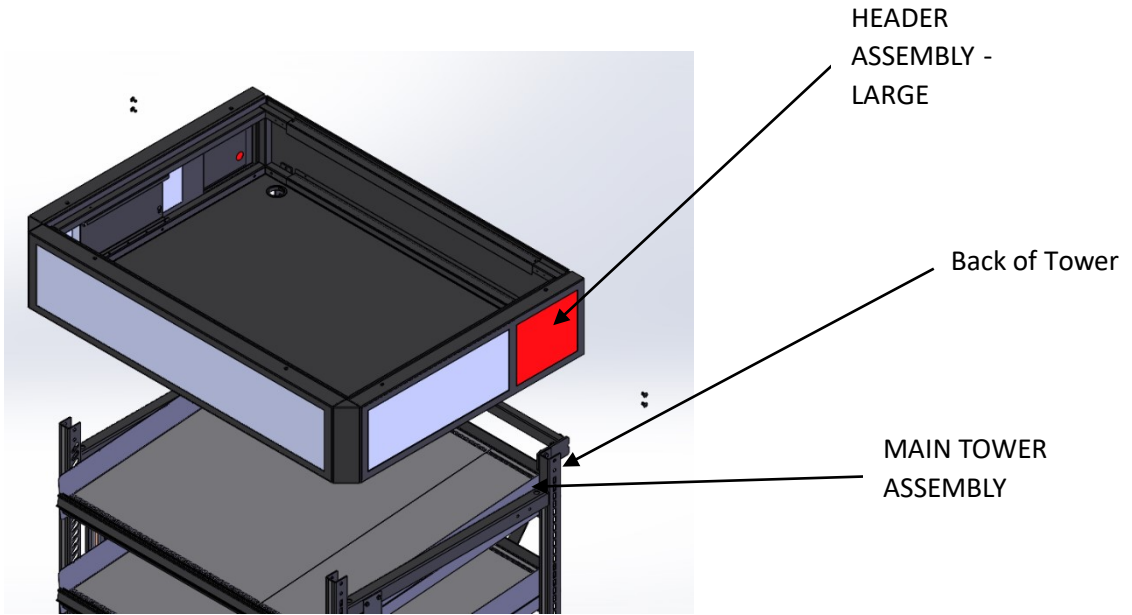


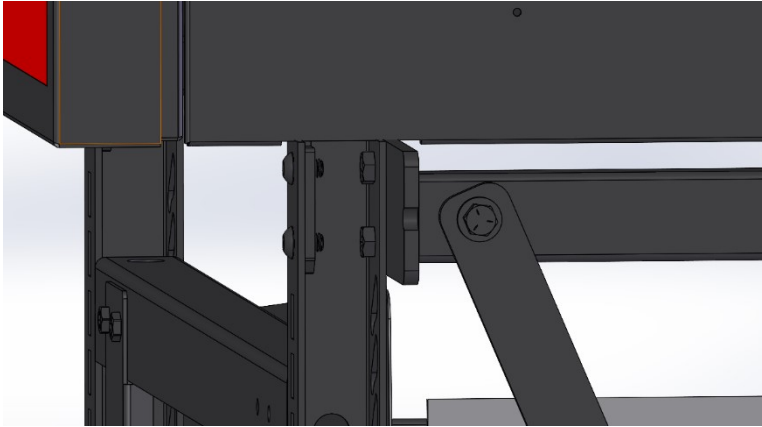
5/16-18 X 5/8" KEPS NUT
QTY. 8



5/16-18 X 1/2" STEEL BUTTON
HEAD SCREW QTY. 4

Step 1: Install the HEADER ASSEMBLY - LARGE into the tower assembly, using 5/1618 x 1/2" Steel Button Head Screws, 2 per side on the back of the tower. Make sure the legs on the Header Assembly fit on the inside of the uprights on the main tower, and that the Header Frame orientation is correct. Do not attach the front of the Header to the tower at this time.

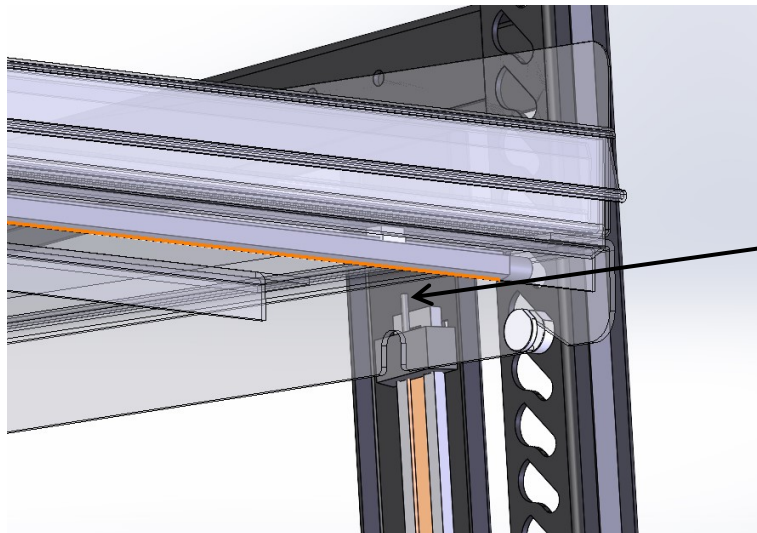




Looking from back, installed Header Frame

Step 2: Feed the wire from the top power plug that is connected to the magnetic rail on the

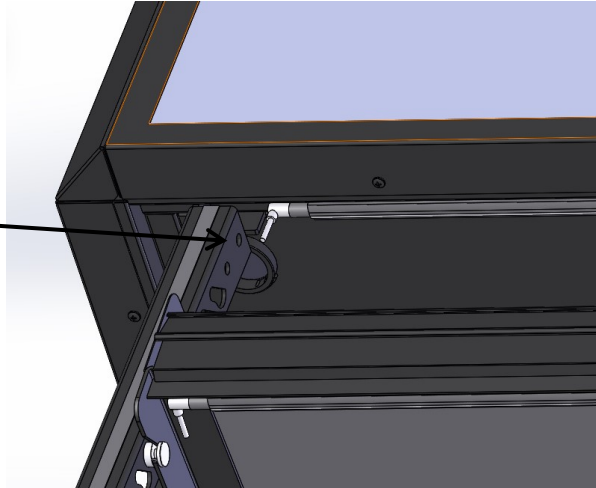
TOWER FINAL ASSEMBLY, next to the top shelf into the hole on the bottom of the HEADER ASSEMBLY. Plug this wire into the transformer located in the HEADER ASSEMBLY.



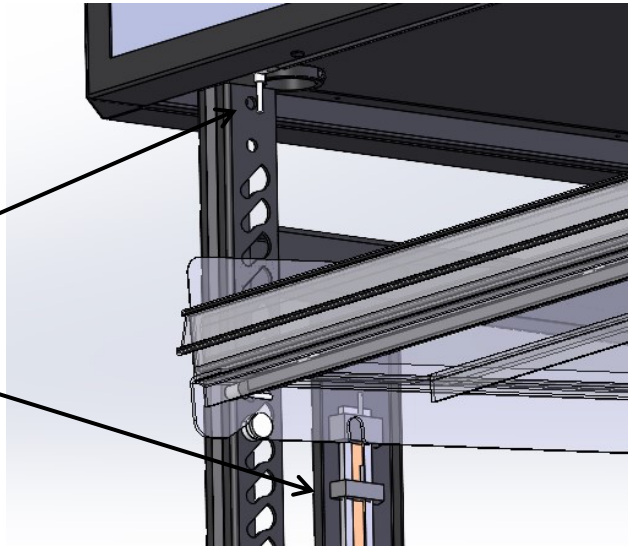
Feed wire w/ jack into the hole at the bottom of the Header Assembly)

Step 3: Take the magnetic connector end of the wire attached to the LED on the top of the Header Assembly and attach to the magnetic rail on the TOWER FINAL ASSEMBLY. The magnetic connector from the Header LED must be below the connector that attached to the HEADER ASSEMBLY in step 2.

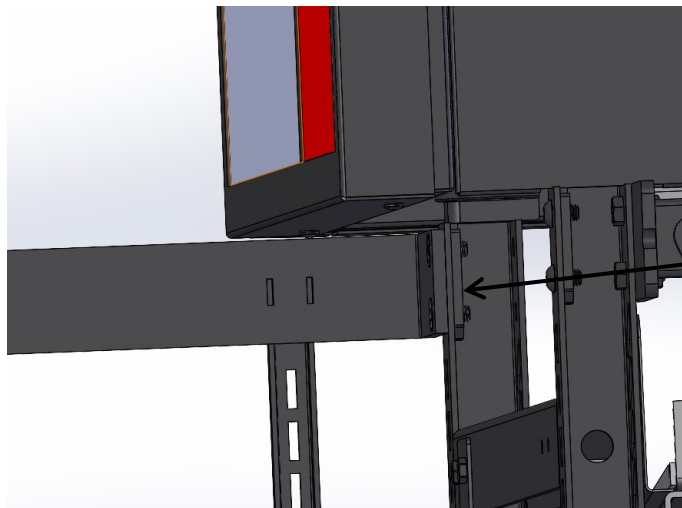
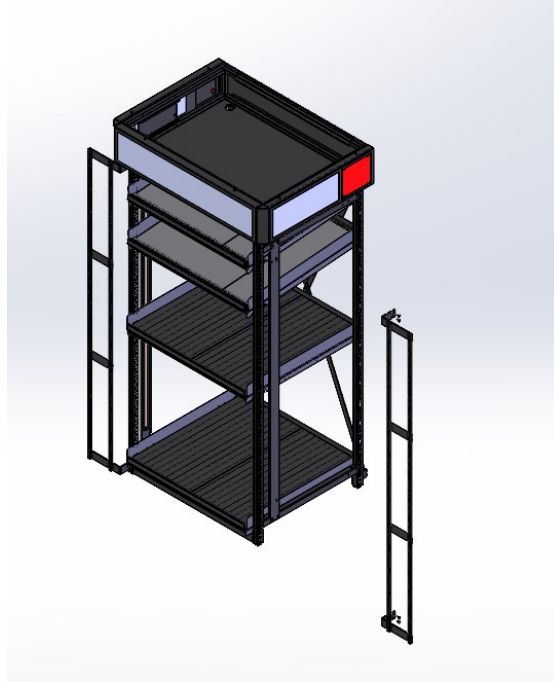
Attach magnetic end
of Connector to rail on
tower assembly



Magnetic end of LED
wire to this position
on the magnetic rail.



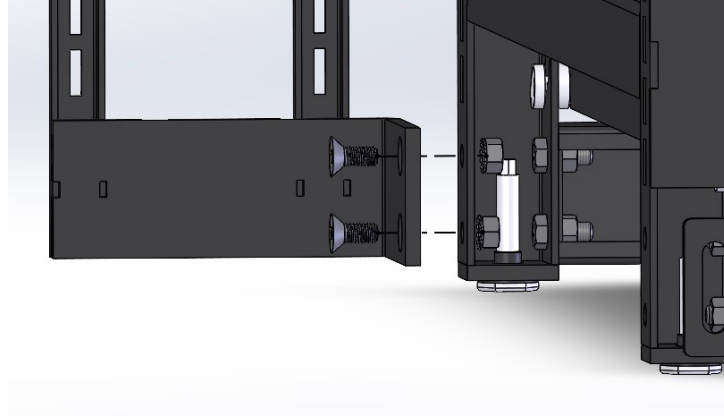
Step 4: Install the Slotted Upright Frame Weldment to the top of the tower using 5/16-18 X 3/4" HEX DRIVE, FLAT HEAD SCREW. The top screw will pass thru the both the TOWER FINAL ASSEMBLY, and the tab on the HEADER ASSEMBLY.



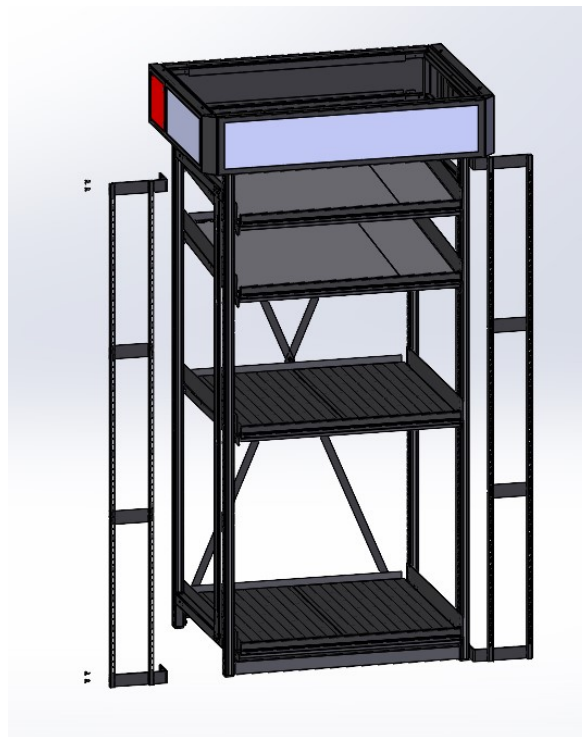
Looking from back,
installed Header Frame

Header tab

Step 5: Attach the bottom of the SLOTTED UPRIGHT FRAME WELDMENT to the CENTER TOWER FINAL ASSEMBLY with the 5/16-18 X 3/4" HEX DRIVE, FLAT HEAD SCREW, and 5/16-18 X 5/8" KEPS NUT.

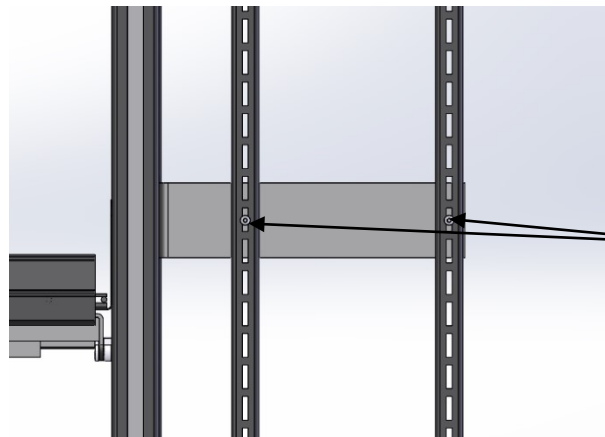
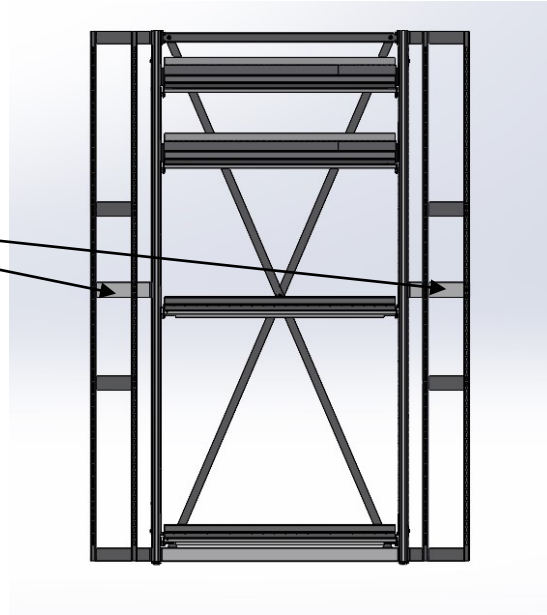


Step 6: Repeat steps 2 and 3 on the opposite side.



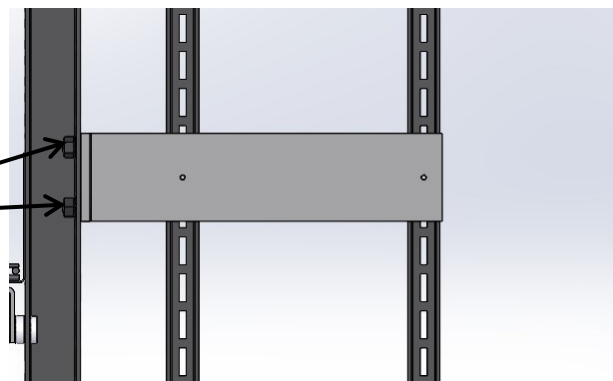
Step 7: Attach the VHE07-121-SM to the right side of the unit using 2 of the 5/16-18 X 3/4" HEX DRIVE, FLAT HEAD SCREWS and 2 of the 5/16-18 X 5/8" KEPS NUT to attach the Support Bracket to the assembled unit. Use 2 of the 8-32 X 3/4" STEEL BUTTON HEAD SCREW to attach bracket to the VHE07-1700-WT Upright Frame. Install the Bracket in between the 2 crossmember plates on the VHE01-1600-WT

VHE07-121-SM

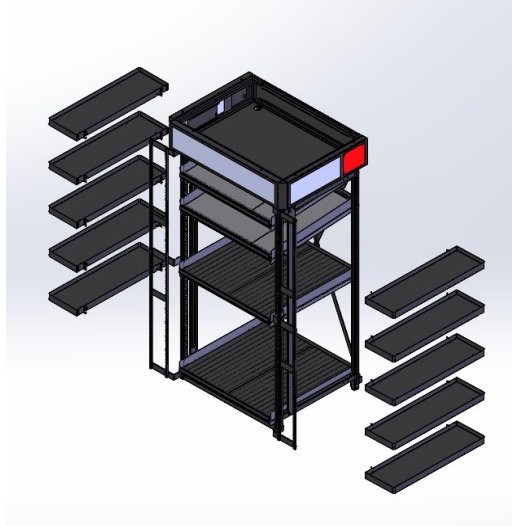


8-32 X 3/4" STEEL
BUTTON HEAD
SCREW

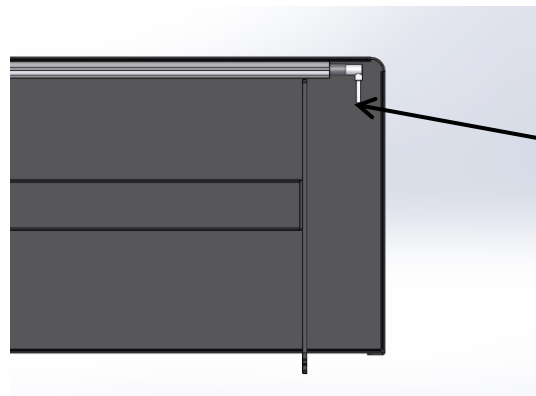
5/16-18 X 3/4" HEX
DRIVE, FLAT HEAD
SCREW W/ 5/16-18
X 5/8" KEPS NUT



Step 8: Place side shelves onto the main tower.

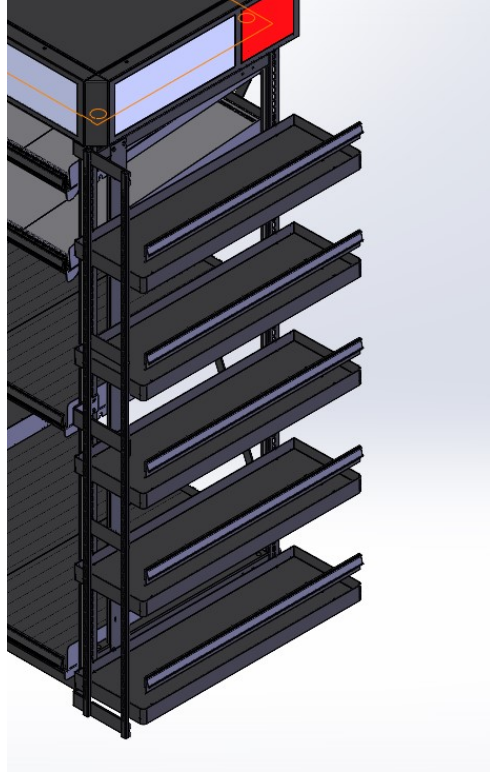


Step 9: Attach the magnetic end of the LED connector at the bottom of each side shelf to the magnetic rail on the TOWER FINAL ASSEMBLY.

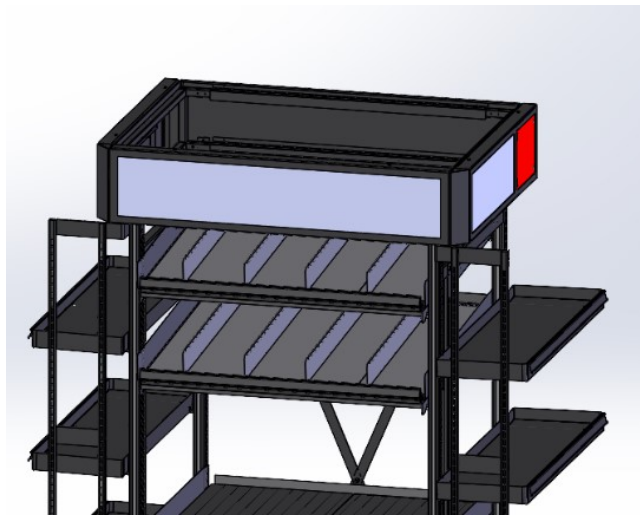


Attach Magnetic end to Power Rail on Tower Assembly

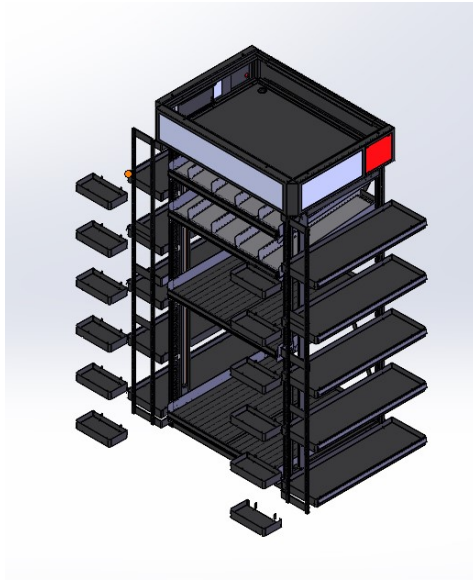
Step 10: Slide the price tag holders into the side shelves, both sides.



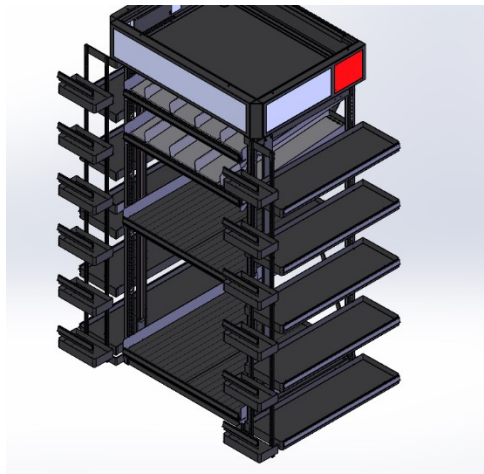
Step 11: Place dividers into the top 2 shelves.



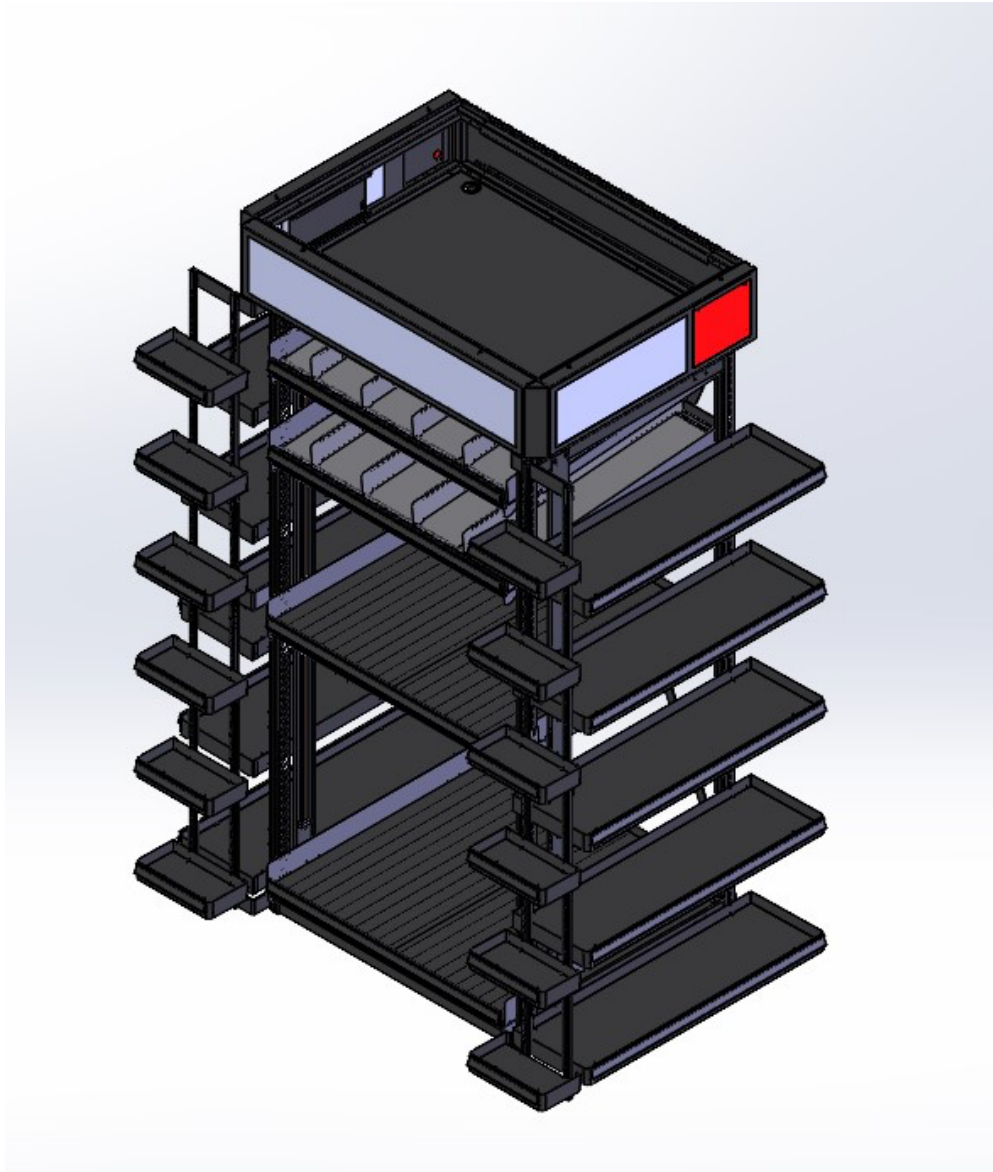
Step 12: Place front shelves onto the SLOTTED UPRIGHT FRAME.

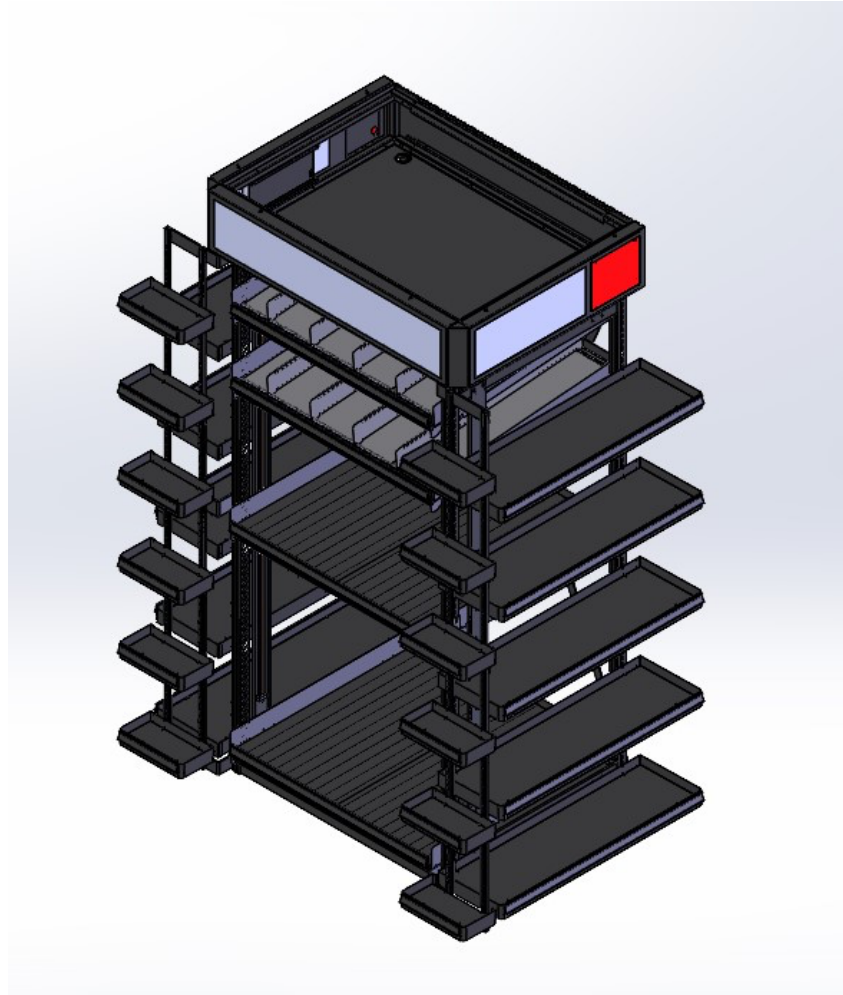


Step 13: Slide the price tag holders into the front shelves, both sides.



Completed Assembly:

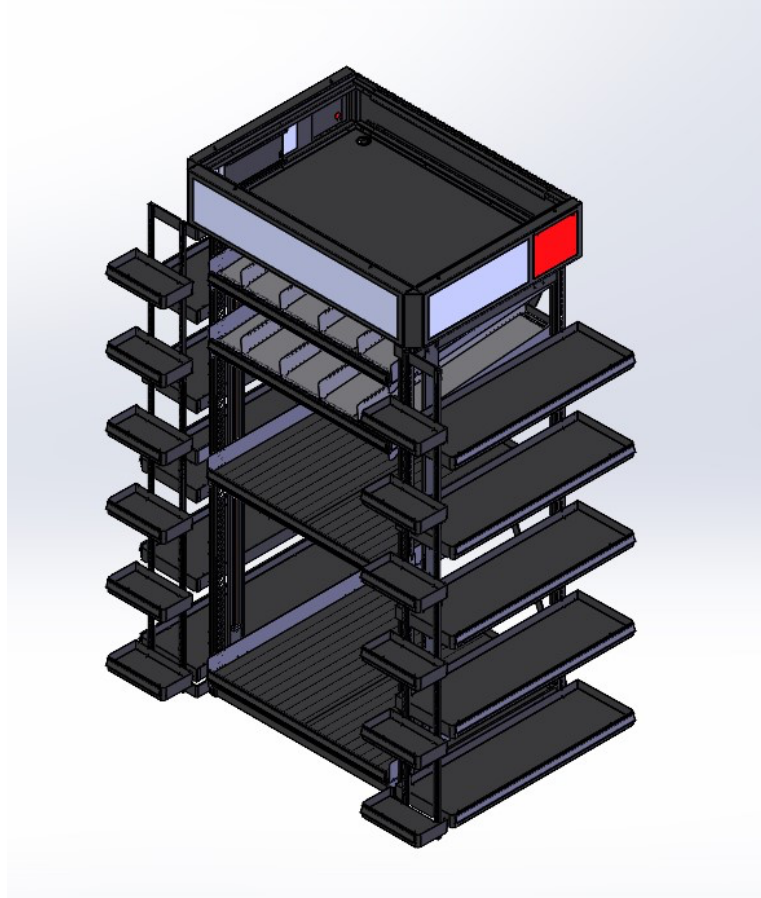




Questions?

Call Customer Service...800-323-2517





Intertek Sanitation Listed
Certified to NSF/ANSI 2 by Intertek